







aAa[®] ~ Unchanged, even after 60 years!

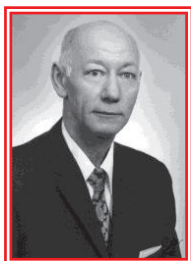
by Tim Baumgartner

#1 (DAIRY)	#2 (TALL)	#3 (OPEN)	#4 (STRONG)	#5 (SMOOTH)	#6 (STYLE)
					
Ample will to milk. Fast milk let down. More milk for size.	Faster growth. High udder for easy care and modern milking.	Room for the udder. Added calving ease. Long breeding life.	Larger Mature size. Healthy udder, feet and legs and lungs.	More appetite. Less injury to teats and legs. Easy milking.	Less foot trimming. Durable bones. Attentive character.

It began in 1950 with a simple concept of helping one dairyman at a time, one cow at a time. From the very start, Mr. William A. Weeks, used a simple common-sense approach to fixing cow's problems to help make her offspring last longer and be more profitable than the current generation he was discussing with the farm owner.

This simple concept of balancing the round and sharp qualities in dairy cattle has not wavered since it was first created. Even today, this approach has reached to nearly all corners of the globe and with the assistance of twenty-five approved aAa[®] (Animal Analysis Associates) analyzers, cows are producing calves that are lasting longer, producing more lifetime milk and requiring less medical attention.

aAa[®] is built upon six main qualities. Mr. Weeks used very simple logic when he was creating aAa[®]. First a cow must produce milk (Dairy); next she must be able to keep her udder up and out of the mud (Tall); she must be able to breed back and calve easily (Open). Next, she must be healthy enough to withstand the stress of high production, movement and calving (Strong), she must possess enough room for large amounts of forage (Smooth), and lastly when all else is working properly, he would like her attractive enough to exhibit at the shows and sell at above average prices (Style).



William A. Weeks

While these are the six main qualities that aAa[®] is based on, the individual parts of the cow are examined to learn why they may function incorrectly. Thus, what makes aAa[®] unique is that the approved analyzers understand the relationship of parts to dairy cattle and through extensive training, comprehend the source of these faults to most accurately fix them. This differs from your local A.I. personnel coming to your farm to view your cattle because they merely measure specific traits.

For example, if you have a cow in your herd that is not milking up to your expectations, there are multiple reasons why her performance levels are diminished. Could she be so tall and narrow that her slabby rib will not expand with feed intake? Could she lack the capacity in her chest and heart region, so she converts more feed into preventative maintenance than into milk? Or is she lacking the overall dairy appearance, due to her saddle loin, short neck and forward rear udder position? Maybe she is so meaty in her udder that milk can't be secreted properly enough? When her udder never empties correctly, she subconsciously decides to not make as much milk on each passing day, and eventually stops lactating.

Do any of you have a cow that just makes you scratch your head on wonder why she don't perform better? When you have made the effort to buy the best bull from the semen salesman and used this bull on a really good milk cow, you're left scratching your head, trying to figure out the reason why the offspring did not perform up to pedigree value. The answer is probably under one of the conditions listed in the previous paragraph and with the assistance of your aAa[®] analyzer, the answer will be revealed and this cow's offspring will be back on target and performing to your expectations.

When your aAa[®] analyzer comes to your dairy and as you walk through your cattle, he will assign numbers to your female cattle, such as "462" or "135" or "234". Each combination of numbers has different meanings. A cow analyzed to be a "462" is a cow that needs STRENGTH (4) first. It is the first limiting factor in this cow's ability to outlive her herd-mates. Next it has been determined that the addition of STYLE (6) will help her offspring to require less visits to the foot trimming area and be a more attractive useful cow and finally the need for TALL (2) will assist her to have a faster, better milk flow.

As simple as this concept is, at times sire selection can appear to be challenging to some. Here are some points to remember. First, males unlike females are analyzed for their qualities, not their faults. We analyze bulls to give dairy producers assistance in understanding what the sire can bring to a selected mating. In all reality, aAa[®] analysis numbers are the only actual information about the bull you have to use when mating your cows! In an ideal world, the cow mentioned previously, needing 462, will be mated to a sire with the same numbers. The key factor is, first the cow needs quality 4 - STRONG. When you're reviewing your semen inventory and your closest match is a bull with aAa[®] codes 432, remember first number is the most important to change the next generation. Using the sire with a 432 analysis still results in an 80% match.

When you purchase your semen, use the evaluations provided by the semen salesman to sort out and find the bulls good enough to use in your herd based on your selection criteria. Then allow aAa[®] to assist you in using the semen on the female cattle that need him the most. After all, getting the best daughters of your semen purchases is more exciting and profitable than just owning a daughter of that same bull. Hopefully now you have a little more understanding why many successful dairymen seem to remain profitable even in difficult economic times and consistently have those above average daughters in their herds for the past 60 years.

More information can be obtained about aAa[®] as well as the list of approved analyzers at www.aAa123456.com.

From The Red Bloodlines September/October 2009

aAa Listing - Red Sires

Listed below are aAa numbers for proven and young sires of interest. aAa is a mating program used by many breeders. We have deleted many sires from this list to make it more current and useful. If there is a current sire not included, please provide the aAa for our next listing.

1	
WEST PORT BOOKMAN-RED	123465
ERBACRES SS CORPORAL-RED-ET	126
GOLDEN-OAKS MR PERKY-RED-ET	132
KINGSMILL RAPIDFIRE-RED-ET	132
MD-HARMONY TAL VICE-RED-ET	132
MER-GOLD ADV MIDAS-RED-ET	132
MEYERVILLA MR TUGOOD-RED-ET	132
TORYS TORNADO-RED-ET	132
COUTURE SCHRED-RED	132456
PEACHEY TUNDEL-RED	132456
MAGY'S LUSTRUM-RED	132546
SURE-VIEW SS AMBUSH-RED-ET	132645
BALDUS LEOPOLLED P-RED	135
CRYSTAL RED REFLEX-RED	135
EVER-GREEN-VIEW LEON-RED-ET	135
LADINODALE ALANDO-RED-ET	135
LADINODALE ALPINE-RED-ET	135
MELLOW-BROOK LB KASEY-RED-ET	135
SHAMDALE GRAND SLAM-RED	135
SURE-VIEW AMERICA-RED-ET	135
LITHIUM-RED	135462
APPLES ABSOLUTE-RED-ET	135645
CARROUSEL ROUGHNECK-RED-ET	153
SCIENTIFIC DEBONAIR-RED-ETS	153
MD-VALLEYVUE TAL LEW-RED-ET	153
GOLDEN-OAKS ROCCO-RED-ET	153624
BOSSIR ELAYO CREST-RED-ET	156
DERRWYN MOONLIGHT-RED-ET	156
GLEN-TOCTIN AMAZE-RED-ET	156
MOHOEVE KOJACK-RED	156
STOKS RED ROULETTE-RED	156
APINA CURTIS-RED	156324
C&M-R-RUN AMER SIMBA-RED	156324
DOMINATOR-RED	156324
KIAN-RED	156432
SURE-VIEW AUDACITY-RED	156432
BIG APPLE-RED-ET	162
FOREST-LAWN PLATTE-P-RED-ET	162
KAMPS-HOLLOW AMMO-RED-ET	162
CARROUSEL RESURRECT-RED	162534
BORHART STORM LOUIS-RED-ET	165
FROZENES TALENT MAKO-RED	165
ROCHER CANVAS KRAFTY-RED-ET	165
STELBRO SCHOLAR-RED-ET	165
SURE-VIEW COLE ARISTOTLE-RED	165
SURE-VIEW SS AMAZE-RED-ET	165
FOREST-LAWN PATRIARK-RED-ET	165234

2	
AGGRAVATION HANGOVER P-RED	213
HICKORYMEA TOTAL P-RED-ET	213
SIR RIDGEDAL RUSTLER-RED-ET	213
HURTGEN-VUE REALITY-RED	312645
JZM LAKE ELMO-RED	213645
WEST-HOPE TALENT CHARMER-RED	213654
CHASIN-RAINBOWS FOX-RED-ET	216
HAVENCREST KOJAK-RED-ET	216
HENKESEEN REMEDY-RED-ET	216
LONE-OAK MAX HAWKEYE-RED-ET	216345
ELM PARK JAKE-RED	231
MEYERVILLA AD BUTANE-RED-ET	231
WILLSWIKK DRAMBUIE-RED-ET	231
AL PAR STADEL ELAYO-RED-ET	231465
BROWNKNING MIRACLE-RED-ET	231456
DUDOC BACCULUM-RED-ET	231456
FLURY'S BRAD FIGARO-RED	231465
GEN-I-BEQ SKYFIRE-RED-ET	231465
IDEE WIRE-RED	231465
BUCKHORN-ACRES DREAM-RED-ET	234
GEN-I-BEQ SELAYO-RED-ET	234
GOLD-N-OAKS ITALIA-RED-ET	234
HICKORYMEA PAUL P-RED-ET	234
J&G TIMELESS-RED	234
NET-A-WAY ELAYO PELE-RED-ET	234
MACABOB JOYCO-RED	234
MR JO-WAL LANGS FALCON-RED	234
PONSSTAR SOULMATE-RED	234
RED IMPULSE-RED	234
ROCHER SARASOTA-RED-ET	234
ROSEDALE ACCOLADE-RED-ET	234
ROSEDALE-L RAMPAGE-RED-ET	234
ROSEDALE TOUCHDOWN-RED	234
VANDE ADVENT VINCENT-RED	234
C&W JORDAN ALLSTAR-RED-ET	234156

2	
C HAVEN SCAR-RED	234156
MER-GOLD RL MARLBORO-RED-ET	234156
MR AMERY-RED	234156
RIDLE-SIDE ROCCO-RED-ET	234156
ESKDALE-NB LUCKY-RED-ET	234165
HUYBENS RED TEQUILA-RED	234165
RIVERDANE ADVENTURE-RED-ET	234165
HICKORYMEA TOPEKA-P-RED-ET	234516
ROKEYROAD-RJM CRAYON-RED-ET	234516
ROSEDALE ADVANTAGE-RED	234615
ARIZONA-RED	243
BUCKHORN-ACRES RISKY-RED-ET	243
BUCKHORN-ACRES RIZZO-RED-ET	243
BUCKHORN-ACRES ROCK-RED-ET	243
DUDOC REDCROSS-RED-ET	243
MD VALLYVUE SS CAL-RED-ET	243
MILKWORTH CASEY-RED-ET	243
NORTHWIND MARMAX LEONID-RED	243
NORTHWIND PRDX LOGAN-RED-ET	243
PINTAIL-POINT TIDBIT-RED-ET	243
RAMA-WAY TALENTI-RED-ET	243
AGGRAVATION LAWN BOY P-RED	243156
ARRON DOON INTENSE BARNY-RED	243516
LA PRESENTATION BELMONDO-RED-ET	243615
BROWNKNING-CW ROUJINA-RED-ET	243651
HEIHOEVE DELTA SPENCER-RED	243651
BUCKHORN-ACRES LUCKY-RED-ET	246
DUTCHLINE RED DEVIL-RED-ET	246
GOLDEN-OAKS PARKSON P-RED-ET	246
KAMPS-HOLLOW ARUDOLF-RED-ET	246
MEYERVILLA TSUNAMI-RED-ET	246
POOS STADEL CLASSIC-RED	246351
EARLY-AUTUMN DASHING-RED-ET	261
GOLD-N-OAKS TALENT-RED	261
KRULL SS EXTRA-RED-ET	261345
LAVENDER REVOLUTION-RED-ET	261345
BOVIGEN-SF REDROCK-RED-ET	261435
BRIAR RADIUS MARTIN-RED-ET	264
HAVE TALENT DAGGER-RED	264
LYNNCREST CASHMAN-RED-ET	264
SCIENTIFIC DIRECTOR-RED-ET	264

3	
AGGRAVATION WUNDER P-RED	312
BUCKHORN-ACRES RITZY-RED-ET	312
BUCKMEADOW SPECIAL-RED	312
CLAYTOP ADDICTION-RED-ET	312
HORSTYLE MAGENTA-RED-ET	312
INDIES-VIEW LUDOVIC-RED	312
MER-GOLD AUTUMN SON-RED	312
MEYERVILLA TACOMA-RED-ET	312
MORRILL CAPTAIN-RED-ET	312
RI-VAL-RE 2377 TORCH-RED-ET	312
TORYS TURVEY-RED-ET	312
WEST PORT SS MARINE-RED	312
A-B-M SID-RED-ET	312456
WILSTAR HIGH CLASS-RED-ET	312456
CASTLEHOLM A RASCAL-RED-ET	312546
LA PRESENTATION PICOLO-RED-ET	312546
RED-VISION AD FLOREY-RED-ET	312546
LADINODALE ALBERT-RED-ET	315
RI-VAL-RE SHOTTLE-RED-ET	315
WEST PORT BRAVISI-RED	315
CASTLEHOLM R RADER-RED-ET	315246
FIELDHOUSE REDLOU-RED-ET	315246
HORSTYLE PYRO-RED-ET	315246
ECHOWOOD PYRO-RED	315264
ELM-PARK TOTO-RED	316
BOOKMARK HARMONY ABE-RED-ET	321
OAKLEIGH REDMAN HERB-RED-ET	321
A-B-M SHACK-RED-ET	321456
DERRWYN MAZDA-RED-ET	321456
HUYBEN DEEJAY-RED	321456
GOLDFAWN-HOL MELVIN-RED-ET	324
KHW KITE ADVENT-RED-ET	324156
MER-GOLD RL MARLBORO-RED-ET	324156
WEST PORT MANIX-RED	324156
MR AMERY-RED	34156
FRADON JET-RED-ET	342
MR BAR-LEE SS MAGIC-RED-ET	342
MR RI-VAL-RE P LUKE-RED-ET	342
WEST PORT MOBY-RED-ET	342156
VALLEYRIVER RUBEN REDMAN-RED	342156
TAYACRES LIMIT-RED	342561

3	
COTTON-SPRING LOLO-RED	345
GRASHOEK WARSTEINER-RED	345
JA-BOB JORDAN-RED-ET	345
MERGOLD PARA-DICE-RED-ET	345
RICH-J FIREBIRD AUTOBOT-RED	345
SELLCREST AD CHRIS-RED-ET	345
SURE-VIEW MARMAX AUBURN-RED	345
APRIL-DAY WINERY-RED-ET	351
BUDJON-NITZY DEVIL-RED-ET	351
HURTGENLEA CARMELLO-RED-ET	351
ROCHER SARASOTA-RED-ET	351
MR FOF RBNS FRANKLIN-RED-ET	351426
SWEET-PEAS FUSION-RED-ET	351426
SURE-VIEW AUBURN-RED-ET	351462
MER-GOLD PERSIA STAR-RED-ET	354
HICKORYMEA TOKAMA-P-RED-ET	354126

4	
APRIL-DAY WISCONSIN-RED	423
EVER-GREEN-VIEW ZORO-RED-ET	423
JOYSTICK-RED	423
MI-RO-ZE MRMX MATRIX-RED-ET	423
SAVARD-RED-ET	423615
THUNDER VAN DE WILG-RED	423651
ELM-PARK TIBET-RED-ET	426
SCHENK'S RINO-RED	426315
BUCKHORN-A-PCRES RAID-RED-ET	432
SHAMDALE SILVERSTONE-RED-ET	432
TRACYS ADVENT TEDDIE-RED	432
JERIAN SIDNEY-RED	432156
BLISSFUL TEDS SPURGEON-RED-ET	432516
ELM-PARK MEXICAN-RED-ET	435
ELM-PARK ROCKIN-RED-TW	435
FRITZLAND LPT TIGER-RED-ET	435
GOLDEN-OAKS VICTOR-RED-ET	435
MER-GOLD STICKY-RED-ET	435
SURE-VIEW ARROW-RED-ET	435
PATIENCESHOWLINE CONTENDER-RED	435216
SHAMDALE SILVERSTONE-RED-ET	435216
DEL-HOLLOW JACKSON-RED-ET	453216
AGGRAVATION DUCKY-RED-ET	456312
FRITZ-PRIDE TYCOON-RED-ET	456312

5	
BIPPER BRUNO-RED	513
GOLDEN-OAKS VINCENTE-RED-ET	513
MINNIGAN-HILLS REGAE-RED-ET	513
JOE-TOWN RICHY-RED-ET	513462
GREENLEA RAMBLE-RED-ET	513642
GREENLEA RUB ROB-RED-ET	516
HENKESEEN RIPPEN-RED-ET	516
JON-LU JD ROCKET-RED-ET	516
PAGE-WAY S S VICTORY-RED	516
POOS BENCHMARK-RED	516342
MR LANDSLIDE-RED-ET	516432
CEDARWAL REDWOOD-RED-ET	531
HORSTYLE JORDY-RED-ET	531
SELLCREST J SUPERMAN-RED	531
BLITZ-RED	531426
TORYS TORNADO-RED-ET	531426
RIDGEDALE-T ROCKIN-RED-ET	531462
FRADON REDLINER-RED	531462
ELM-PARK AMERICAN-RED-TW	534
SURE-VIEW ARROW-RED-ET	534612
PLUSHANSKI SHAN AJAX-RED-ET	541632
AGGRAVATION DUCKY-RED-ET	546312
LAWRENCE-HAVEN ASHTON-RED	561423

6	
ZIMMERVIEW LWNBY JUD-RED-ET	615
MR A-D RASPBERRY LU-P-RED-ET	615243
SCIENTIFIC ST PATRIK-RED-ET	641
WILONNA REDBULL-RED-ET	642
CHANAY STADEL ALTIVO-RED	642513
HICKORYMEA LYPOLL P-RED-ET	651432
JA-BOB HAMLET-RED	654

aAa Listing - Red Factor Sires

1	
GEN-I-BEQ SAHARA-ET-RC	123645
QUALITY FIREWALL-ET-RC	126
BONHILL MECHANIC-RC	132
ORBE-VIEW S STRM HVEZDA-ET-RC	132456
LE-RO-DA TOYSTORY RANDAL-ET-RC	153
RIDGEDALE-T REFRESH-ET-RC	153426
ALBIORIX-RC	156
LADINO PARK TALENT-IMP-ET-RC	156243
ARETHUSA SS MERLIN-RC	156324
ARETHUSA SS MIDAS-ET-RC	156324
B-HIDDENHILLS MAR MARMAX-ET-RC	156324
PURSUIT SEPTEMBER STORM-ET-RC	156342
ELDERS-DREIVE SSTM ADAM-ET-RC	1625
PARADISE-RV PHTHON-RC	162354
SAVAGE-LEIGH LYDON-ET-RC	165

2	
MURANDA RUBENS LAKE-RC	213
SCIENTIFIC DESTROY-ET-RC	213
GEGANIA DUPLEX SPARROW-RC	213456
PEACHEY LEE TITUS-RC	216
GAR-RI BAX CARRIER 3112-ET-RC	231
MR BTR SHOTTLE BURNY RF-RC	231
RUSH DARIO-ET-RC	231
G-TOCTIN-SM COLE-ET-RC	231456
LIGHTNING-RC	231456
MISTY SPRINGS BURMLEY-ET-RC	231465
MORSAN FRONTRUNNER-RC	231465
STBVQ RUBENS-ET-RC	231465
WINDY-KNOLL-VIEW PARK-ET-RC	231465
MARKWELL KITE-ET-RC	234

2	
MD-VALLEYVUE CHRISTIAN-ET-RC	234
SCHAUFINE SEP STORM CHUCK-RC	234
WEST PORT GOLDWYN BADGER-ET-RC	234
DESLACS SHAQUILLE-ET-RC	234156
RIVERDANE RSE REFLECTION-ET-RC	234156
RA-MAR-LAND LION KING-RC	234165
GREENLEA SS CARMAN-ET-RC	243
SCIENTIFIC SS DUSK-ET-RC	243
GEN-I-BEQ SALTO-RC	243156
WINDY-KNOLL-VIEW PLATNUM-ET-RC	243156
MD-VALLEYVUE GOLD CHRIS-ET-RC	243165
ARDROSS STERLING-ET-RC	243165
VILEMOV KAMPAGE-ET-RC	243165
GEN-I-BEQ DUCHAMP-ET-RC	246
GEN-I-BEQ SUNGOD-ET-RC	246
WINDY-KNOLL VIEW PRINCE-ET-RC	2614

3	
KHW ELM-PARK ACME-ET-RC	312
MR ADVENT HAVEN-ET-RC	312
QUALITY FIREWALL-ET-RC	312
COMESTAR LS LOGICAL-RC	312456
DELTA LIONEL-RC	312456
SCHAUFINE SEP STORM CHUCK-RC	312456
WIND-D-ACRES ICICLE-ET-RC	312456
JEF-LEN SABER-RC	315246
DUDOC MR BURNS-ET-RC	321
GLEN-TOCTIN LEBRON-ET-RC	321
WEST PORT ARRON DOON MITEY P-RC	321456
NEEDLE-LANE OHLMAN-RC	324

3	
HICKORYMEA TURLEY P-RC	342156
SCIENTIFIC SS DUSK-ET-RC	342516
ARNELL ELEGANT-RC	345126
HEATHERSTONE REDWOOD-ET-RC	345126

4	
SCIENTIFIC DEMELLO-ET-RC	423
CASTLEHOLM IDLE PRIVATE-ET-RC	423651
GOLD-N-OAKS S SCOTT-ET-RC	423651
HICKORYMEA OTTAWA-P-ET-RC	426
DESLACS DUSTER-ET-RC	432516
SCIENTIFIC SS DEUCE-ET-RC	432516

5	
MD-MAPLE-DELL TAL CURK-ET-RC	513642
HET BROEK LUCRATIVE-RC	516
DELTA CANVAS-RC	516243
KHW REDBULL-RC	531
STELSE O MAN MONSTER-RC	531
AGGRAVATION DIETER P-ET-RC	546312
B-HIDDENHILLS MAR MARMAX-ET-RC	561
BURKET-FALLS POLLED PLEDGE -ET-RC	564

6	
SPRINGWAY TALENT CORONA-ET-RC	612
WINDSOR-MANOR ZE SKYLAR-ET-RC	612
GRANDUC TRIBUTE-RC	615432

Updated 10.23.09