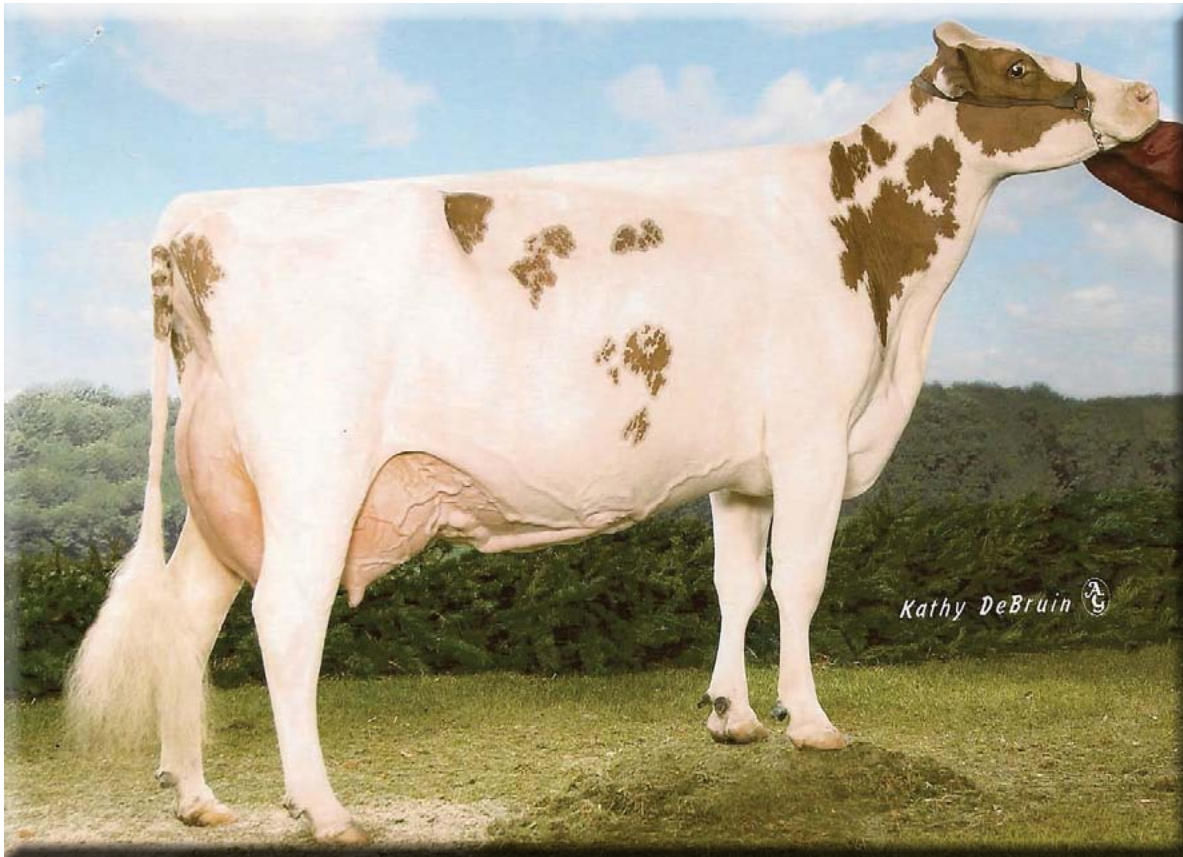


# Precious Pimm



## Elm-Park Pimm-Red-ET EX-93-2E EEEEE @ 6-09

WW60537878

HO60537878

1-11 365D 31,230M 4.4% 1382F 3.0% 952P  
 4-02 305D 29,190M 4.2% 1212F 3.1% 891P  
 6-00 365D 33,620M 4.5% 1497F 3.1% 1035P  
 LIFE: 145,520M 4.5% 6525F 3.2% 4699P  
 8-11 PTA: -393M +36F -8P 63%R +185NM\$ TPI: +1437M

- STARSTRUCK J PARADOX-RED-ET
- ELM-PARK S PRIM-RED-ET EX-91-2E  
 5-03 365D 40,810M 4.7% 1910F 3.2% 1319P  
 LIFE: 220,870M 4.8% 10709F 3.5% 7758P
- BROOKNOOK MILESTONE-RED-ET
- STOOKEY ELM-PARK PRIMROSE-ET-RC EX-90-2E  
 7-08 365D 31,270M 5.4% 1696F 3.5% 1109P
- NANDETTE TT SPECKLE-RED EX-93 EEEE DOM  
 4-08 365D 25,290M 4.7% 1195F
- NANETTE RILEY NANA-RED VG-87  
 7-01 365D 20,070M 3.4% 677F 3.1% 621P
- NANDETTE BOOTMAKER GALE VG-89  
 5-07 305D 22,300M 4.0% 896F  
 LIFE: 129,410M 3.8% 4916F

- Completes 4 generations of Excellent!
- Reserve All-American 4-Yr-Old 2007 & Nominated All-American 2-Yr-Old 2005
- Great personality and easy to work with!
- Pimm's Dam Nominated All-American 2003 & 2006
- Pimm's 4th Dam All-American 1981 & 1984
- Pimm's 3rd Dam's sister (Blackrose EX-96-3E EEEEE GMD DOM) All-Time All-American Jr. 2-Yr-Old & Jr. 3-Yr-Old
- Pimm's 2nd Dam's sister (Stookey Citation Sharon-Red EX-91-2E EEEEE) 3x All-American in milking form
- Currently in IVF program
- Visit our NEW website designed by the RWDCA for updates at [www.clayhillstowdale.com](http://www.clayhillstowdale.com)



## Clay-Hill/Stowdale

Lisa Tobler  
 Phone: 518-265-9639  
 Email: [clayhillstowdale@gmail.com](mailto:clayhillstowdale@gmail.com)  
 Website: [www.clayhillstowdale.com](http://www.clayhillstowdale.com)

Kerry & Karen Stowell - Baler & Case  
 1545 Kennedy Road  
 St. Johnsville, NY 13452  
 Phone: 518-568-2881

Gary Stowell  
 Phone: 518-496-1164